

## **A RANGE U.S. ACCESSORY PARTS LIST**

# **INDEX**

DESCRIPTION	KIT NO.	PAGE
<b>GEAR END P.T.O.</b>		
CLUTCH, 1 CYL	991-00039	4
<b>FLYWHEEL END P.T.O</b>		
CLUTCH, 1 CYL	991-00040	6
CLUTCH, 2 CYL	991-00041	8
SHAFT EXTENSION, 1 7/16" DIA	991-00033	10
<b>ARROWBOARD ACCESSORIES</b>		
LOW OIL PRESSURE SWITCH	991-00010	12
HOUR METER	991-00012	14
RUNNERS & ANTI-VIBRATION MOUNTS	991-00004	16
DIRECT-DRIVE ALTERNATOR COUPLING	991-00036	18
ALTERNATOR, BELT DRIVE	991-00006	20
START PANEL & WIRING	991-00007	22

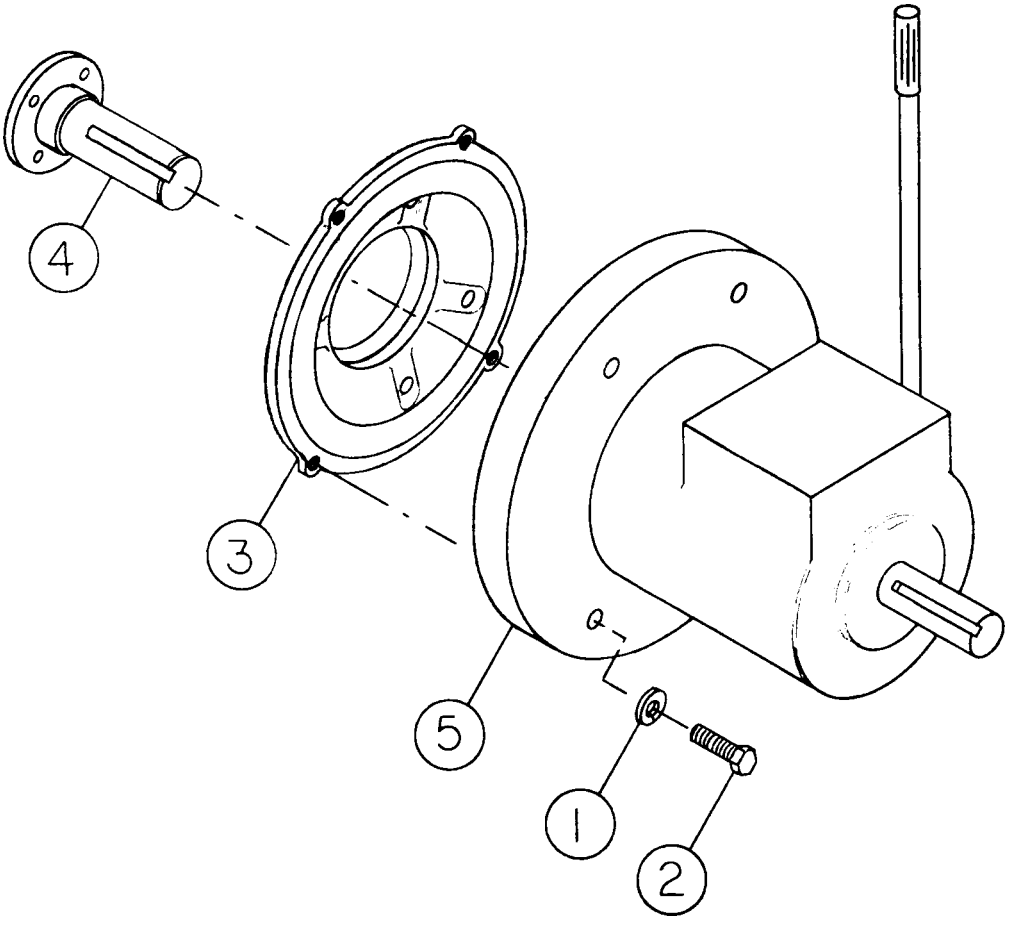
This page is intentionally left blank

This page is intentionally left blank

# A RANGE GEAR END P.T.O.

GEAR END CLUTCH, 1 CYL. .... 991-00039

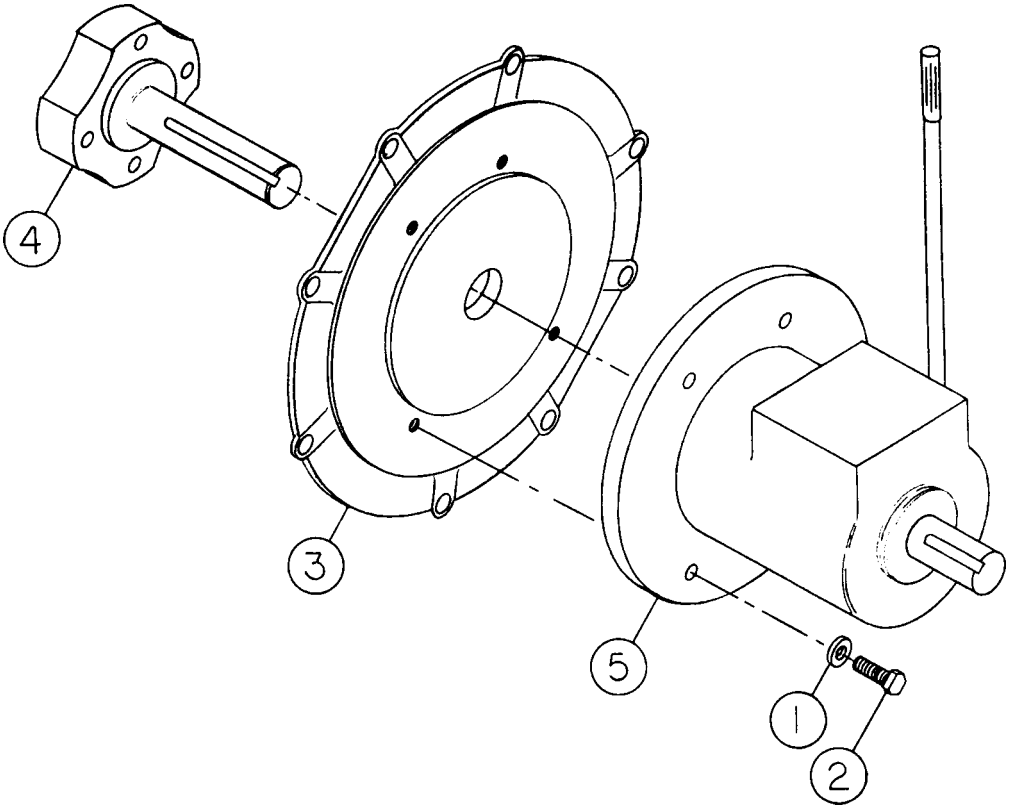
	DESCRIPTION	PART NO.	QTY.
1.	SPRING WASHER 3/8"	027-00393	4
2.	BOLT 3/8" UNC X 1 3/8"	270-00589	4
3.	GEAR END ADAPTOR	360852	1
4.	EXTENSION SHAFT	360858	1
5.	CLUTCH	389506	1



# A RANGE FLYWHEEL END P.T.O.

FLYWHEEL END CLUTCH, 1 CYL. .... 991-00040

	DESCRIPTION	PART NO.	QTY.
1.	SPRING WASHER -1 3/8"	027-00393	4
2.	BOLT 3/8" UNC X 1 3/8"	270-00589	4
3.	FLYWHEEL END ADAPTOR	361653	1
4.	EXTENSION SHAFT	362109	1
5.	CLUTCH	389506	1

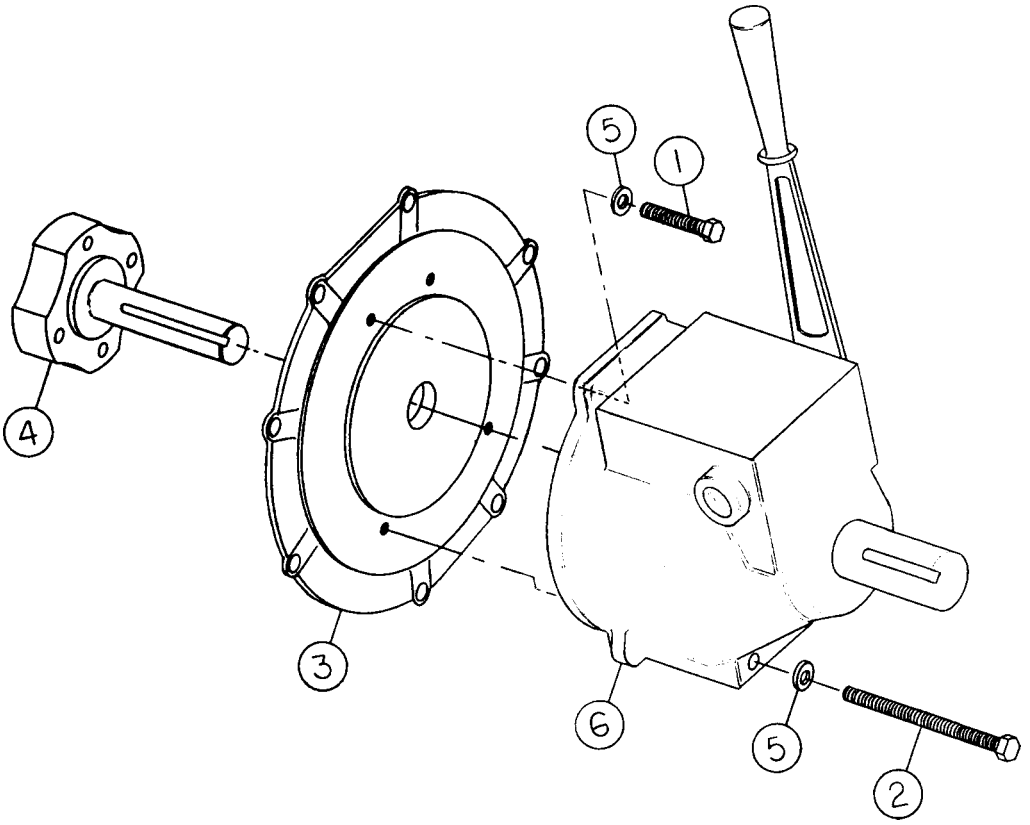


# A RANGE FLYWHEEL END P.T.O.

FLYWHEEL END CLUTCH, 2 CYL. .... 991-00041

	DESCRIPTION	PART NO.	QTY.
1.	BOLT 7/16" UNC X 2 1/2"	000-03965	2
2.	BOLT 7/16" UNC X 5 1/2"	000-04705	2
3.	FLYWHEEL END ADAPTOR	9612115F	1
4.	SHAFT EXTENSION	000-04189	1
5.	SPRING WASHER 7/16"	027-00984	4
6.	CLUTCH	389528	1

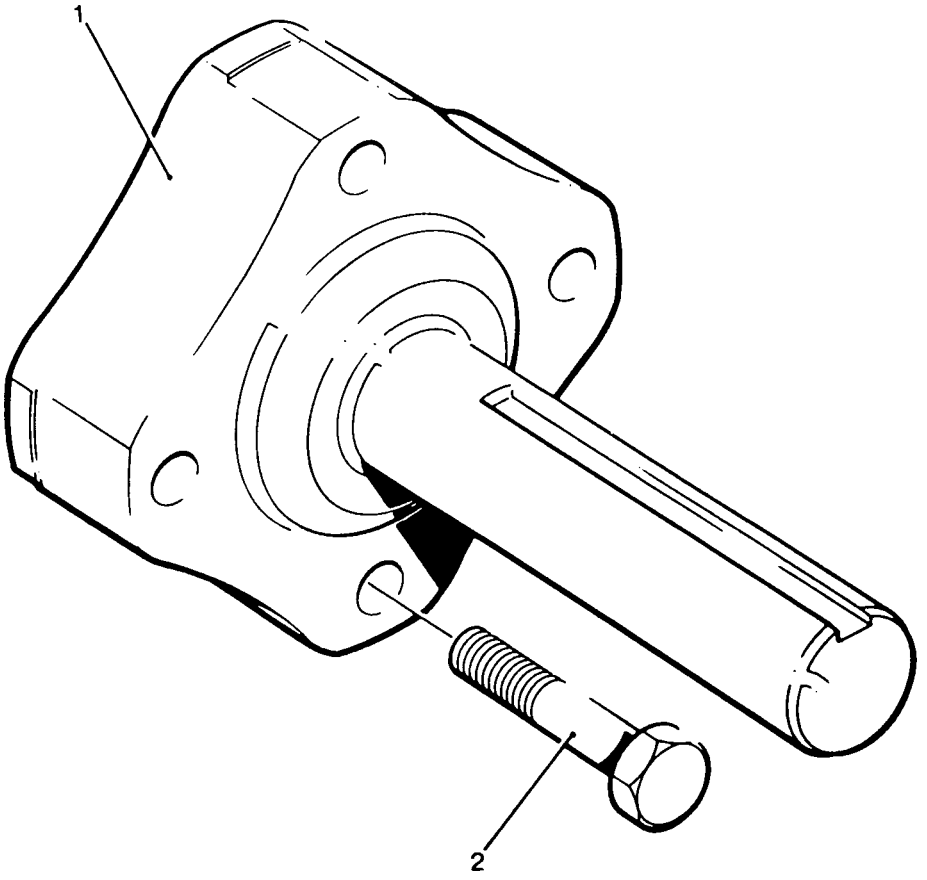




# A RANGE FLYWHEEL END P.T.O.

1 7/16" DIA. SHAFT EXTENSION ..... 991-00033

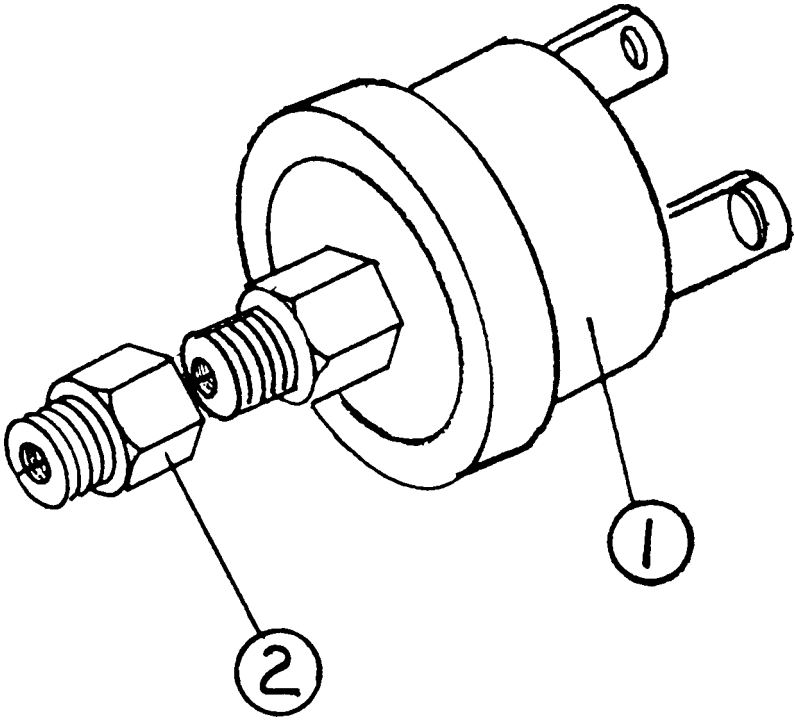
	DESCRIPTION	PART NO.	QTY.
1.	SHAFT EXTENSION	000-04189	1
2.	BOLT 5/16" UNF X 1 3/4"	270-00064	4



# **A RANGE ARROWBOARD ACCESSORIES**

**LOW OIL PRESSURE SWITCH ..... 991-00010**

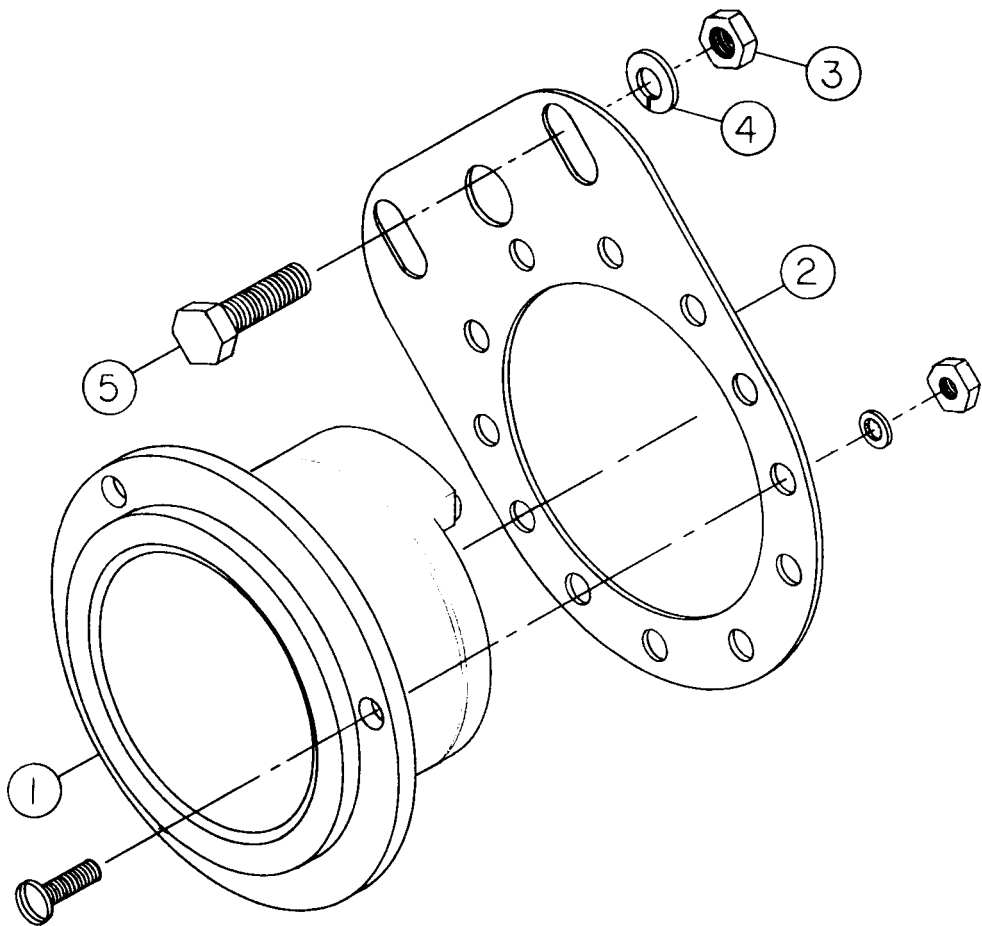
	DESCRIPTION	PART NO.	QTY.
1.	OIL PRESSURE SWITCH	000-00634	1
2.	B.S.P. ADAPTOR	000-00244	1



# A RANGE ARROWBOARD ACCESSORIES

**HOUR METER KIT ..... 991-00012**

	DESCRIPTION	PART NO.	QTY.
1.	HOUR METER	389532	1
2.	MOUNTING BRACKET	389533	1
3.	NUT 1/4" UNC	756606	2
4.	SPRING WASHER 1/4"	786078	2
5.	SCREW 1/4" UNC X 1/2"	000-01878	2

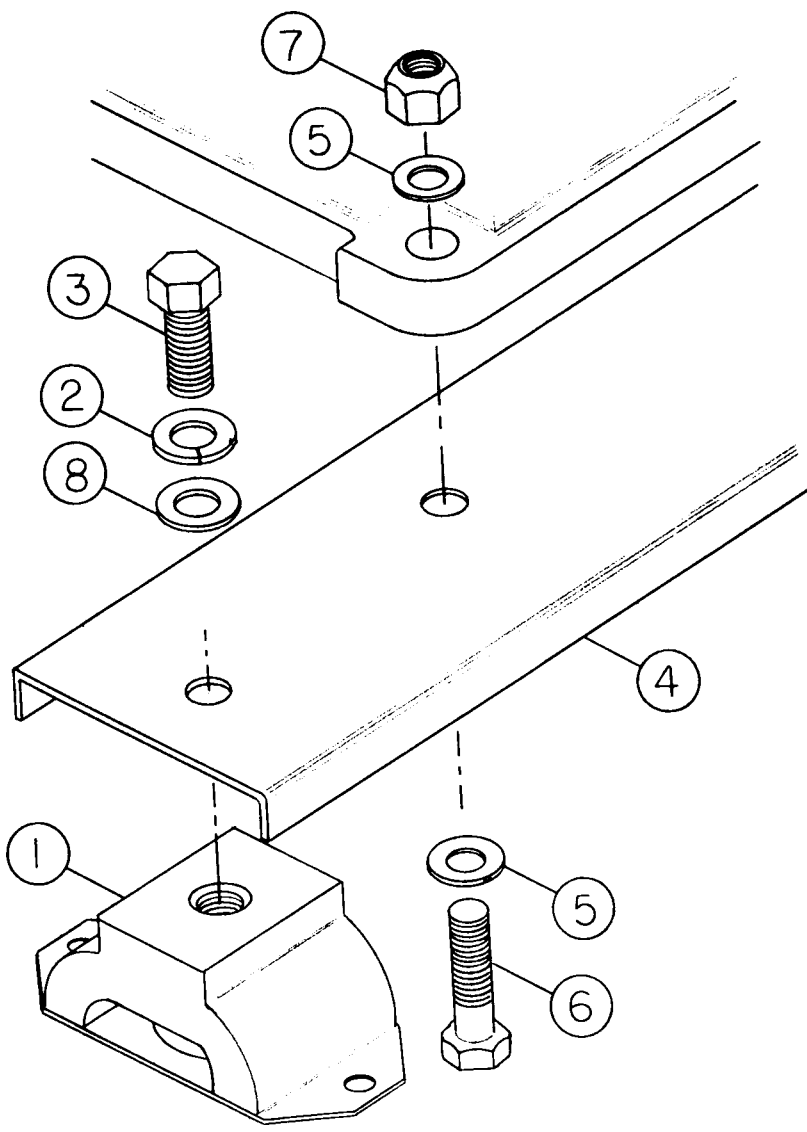


# A RANGE ARROWBOARD ACCESSORIES

## RUNNERS & ANTI-VIBRATION MOUNTS ..... 991-00004

	DESCRIPTION	PART NO.	QTY.
1.	ANTI-VIBRATION MOUNT	000-00773	4
2.	SPRING WASHER 1/2"	027-00394	4
3.	BOLT 1/2" UNC X 1"	389507	4
4.	ENGINE SUPPORT	389518	2
5.	PLAIN WASHER 3/8"	389555	8
6.	BOLT 3/8" UNC X 1 1/2"	755031	4
7.	LOCK NUT 3/8" UNC	757103	4
8.	PLAIN WASHER 1/2"	785045	4

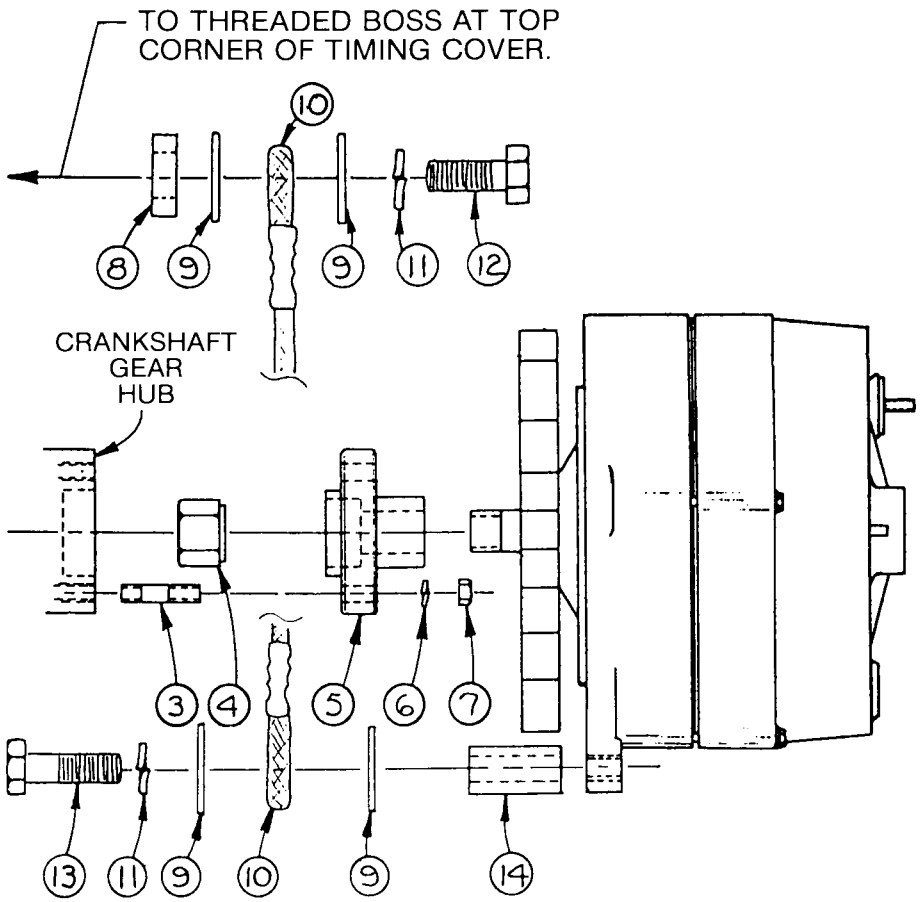




## **A RANGE ARROWBOARD ACCESSORIES**

**DIRECT DRIVE ALTERNATOR COUPLING ..... 991-00036**

	DESCRIPTION	PART NO.	QTY.
3.	STUD	270-00120	4
4.	NUT, ALTERNATOR SHAFT	000-04108	1
5.	ADAPTOR	000-04106	1
6.	SPRING WASHER 1/4"	786078	4
7.	NUT 1/4" UNF	746606	4
8.	DISTANCE PIECE	351-11630	1
9.	PLAIN WASHER 5/16"	785632	4
10.	CABLE	000-02946	1
11.	SPRING WASHER 5/16"	027-00413	2
12.	BOLT 5/16" UNC X 1 1/4"	752651	1
13.	BOLT M8 X 25	272-00044	1
14.	DISTANCE PIECE	351-16621	1

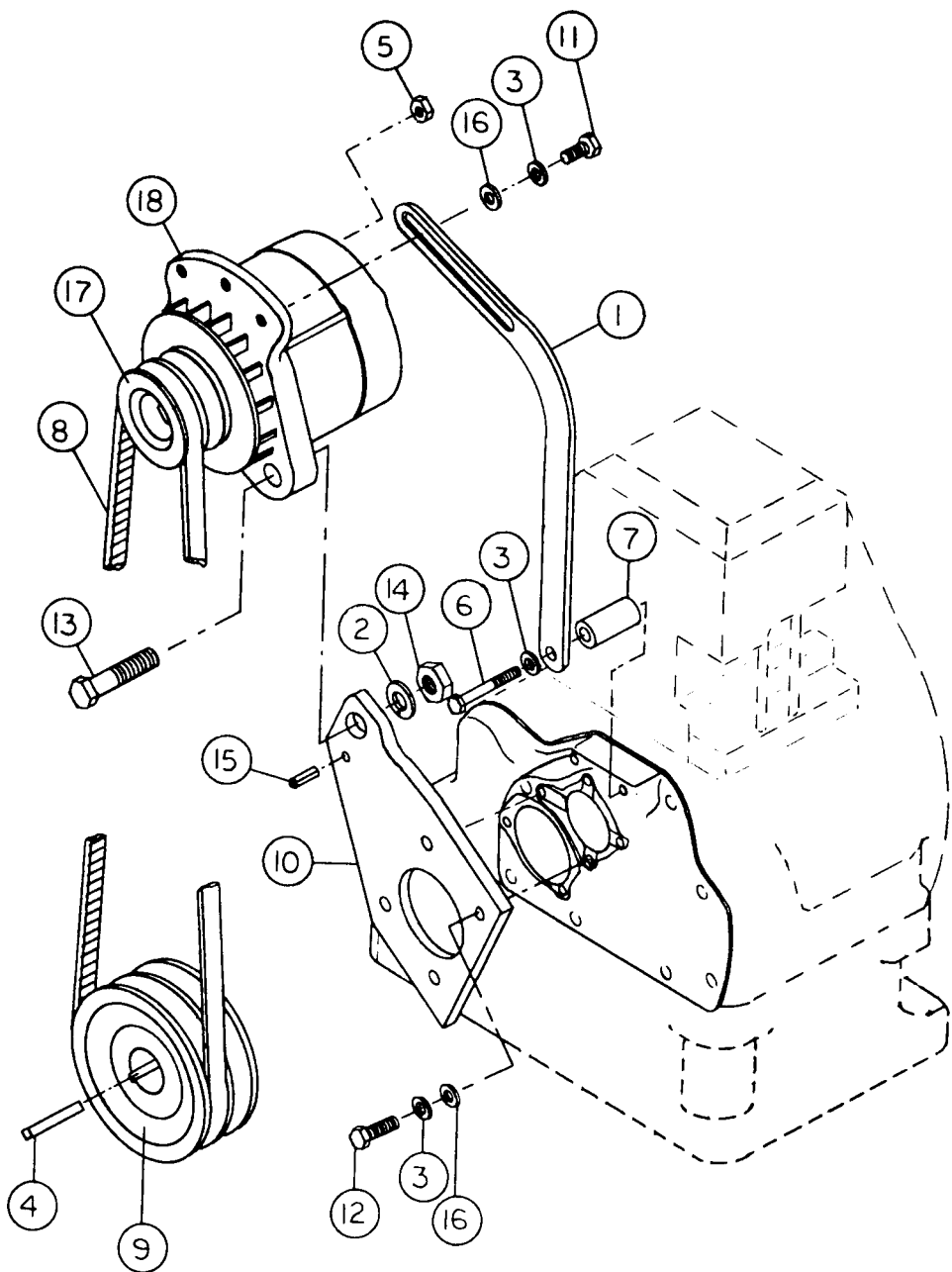


VIEW FROM ABOVE

## A RANGE ARROWBOARD ACCESSORIES

ALTERNATOR KIT, BELT DRIVE ..... 991-00006

	DESCRIPTION	PART NO.	QTY.
1.	ADJUSTING STRAP	000-03506	1
2.	SPRING WASHER 1/2"	027-00394	1
3.	SPRING WASHER 5/16"	027-00413	6
4.	SQUARE KEY 1/4" X 1 1/2"	101-00612	1
5.	NUT #10 UNC	101-00618	1
6.	BOLT 5/16" UNC X 2"	270-00450	1
7.	SPACER	382-03498	1
8.	V-BELT	389508	2
9.	ENGINE PULLEY	389513	1
10.	ALTERNATOR BRACKET	389514	1
11.	BOLT 5/16" UNC X 3/4"	752647	1
12.	BOLT 5/16" UNC X 1"	752649	4
13.	BOLT 1/2" UNC X 2 1/4"	755100	1
14.	NUT 1/2" UNC	756010	1
15.	ROLL PIN 3/16" X 3/4"	774159	1
16.	FLAT WASHER 5/16"	785632	5
17.	ALTERNATOR PULLEY	000-00753	1
18.	ALTERNATOR	000-01576	1



# A RANGE ARROWBOARD ACCESSORIES

## START PANEL & WIRING ..... 991-00007

	DESCRIPTION	PART NO.	QTY.
1.	AMMETER	000-00030	1
2.	ADAPTOR	000-00244	1
3.	OIL PRESSURE SWITCH	000-00634	1
4.	SPRING WASHER 3/8"	027-00393	2
5.	BOLT 3/8" UNC X 1"	270-00288	2
6.	KEY SWITCH	366-06379	1
7.	START PANEL	389517	1
8.	PLAIN WASHER 3/8"	389555	2

